

# PC WLAN Client Adapter Configuration Guide

Mika Loukola  
Loukola Productions Oy

***List of settings for the PC WLAN Client Adapter:***

- SSID *wlan1*
- WPA
- TKIP
- PEAP (no server cert validation)
- EAP-MSCHAP v2 (always ask username)

***Hardware Used:***

PC/Laptop:

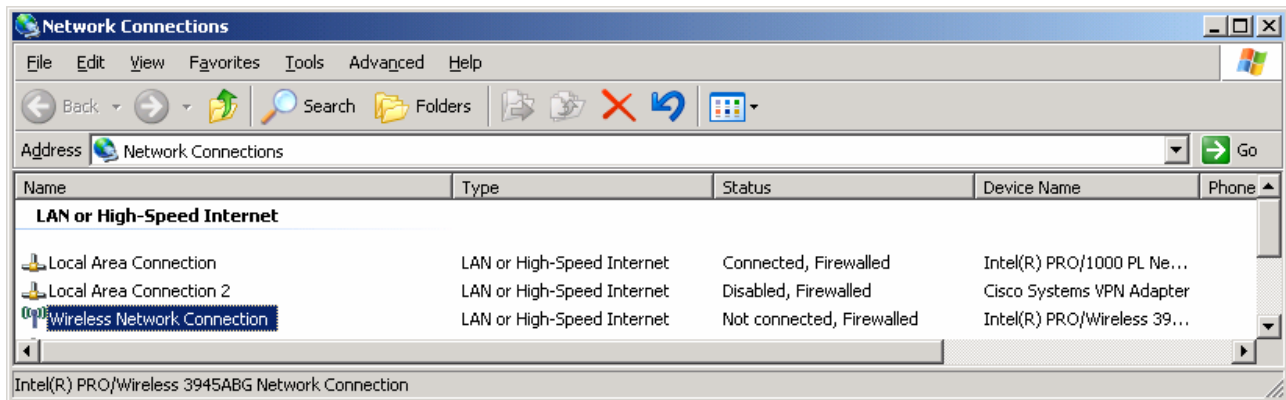
IBM T60 + Intel(R) PRO/Wireless 3945ABG Net

OS:

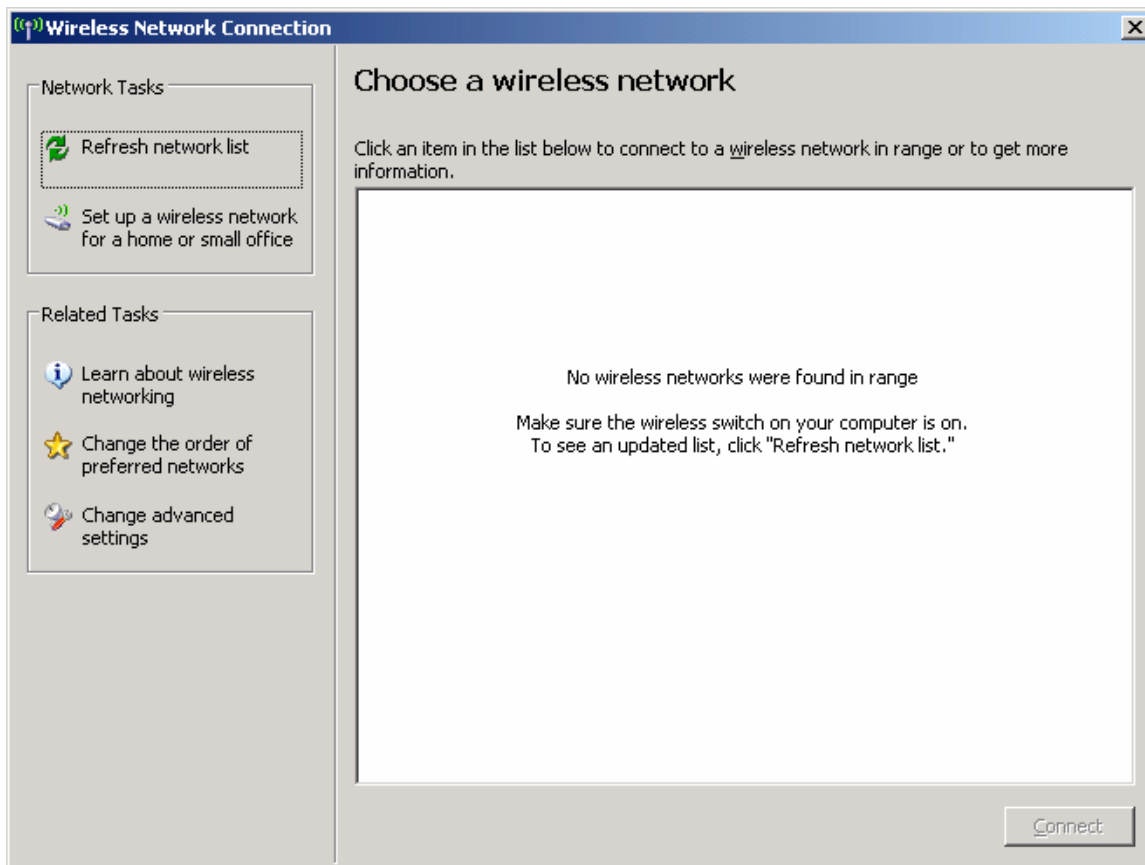
Microsoft Windows XP [Version 5.1.2600]

## Configuration

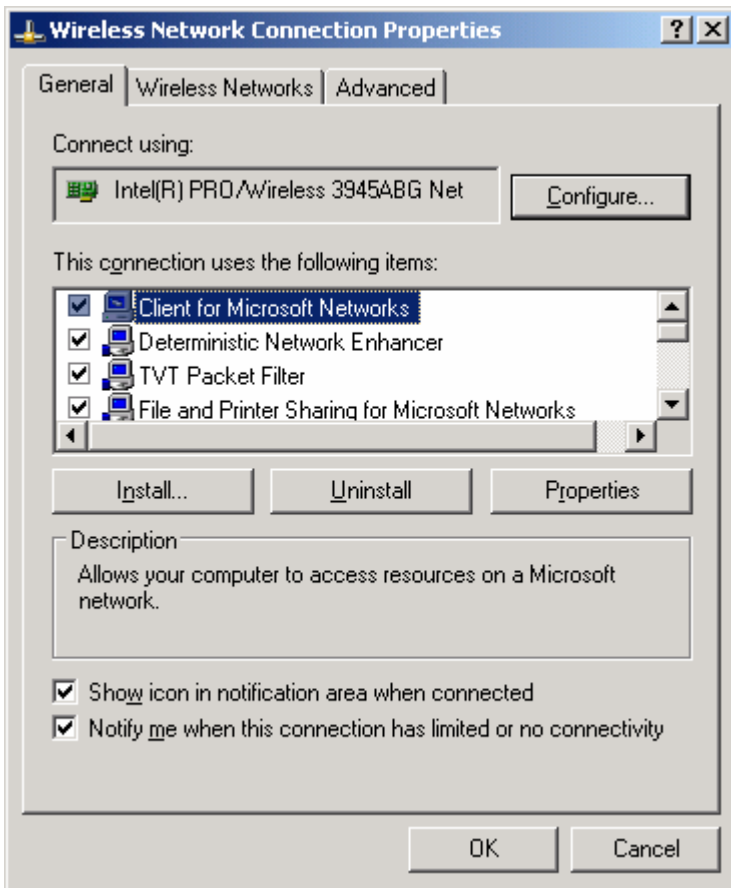
Start->Settings->Network Connections



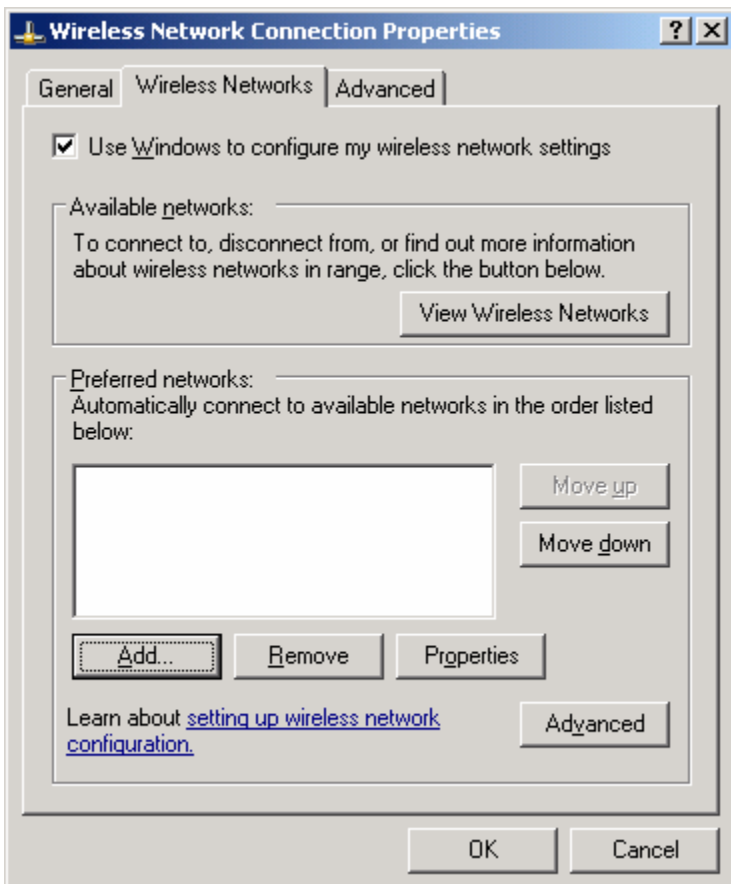
->Wireless Network Connection



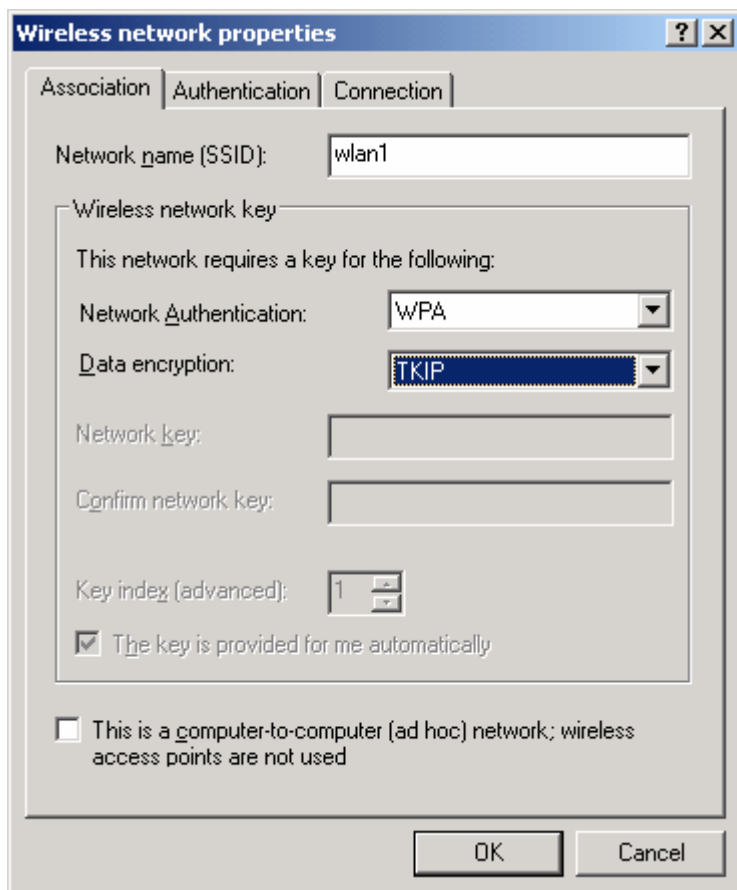
->Change advanced settings



->Wireless Networks

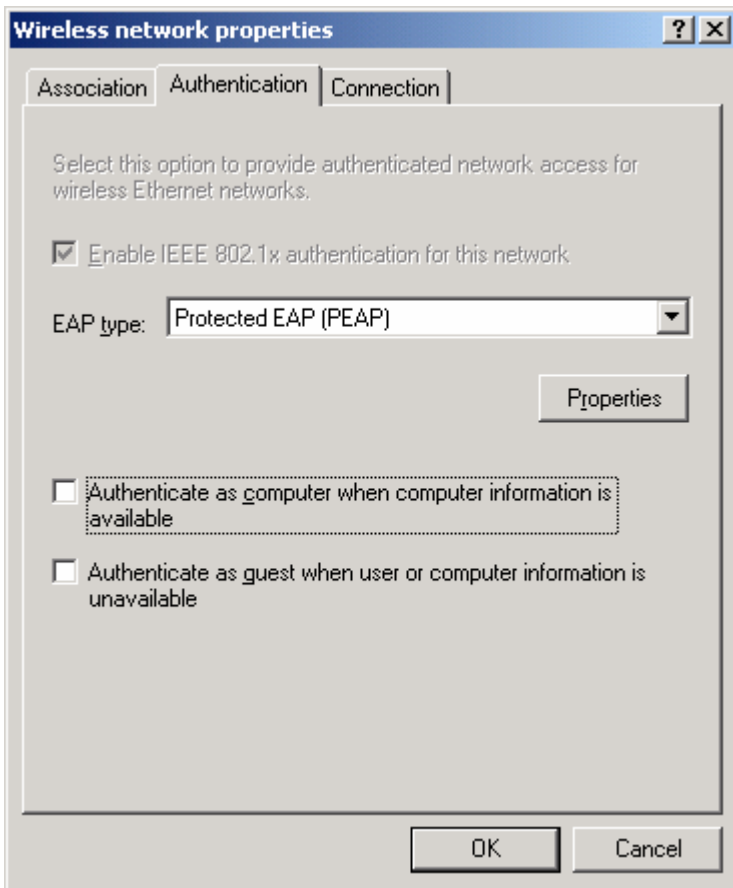


->Add...



Network name (SSID): wlan1  
Network Authentication: WPA  
Data encryption: TKIP

->Authentication

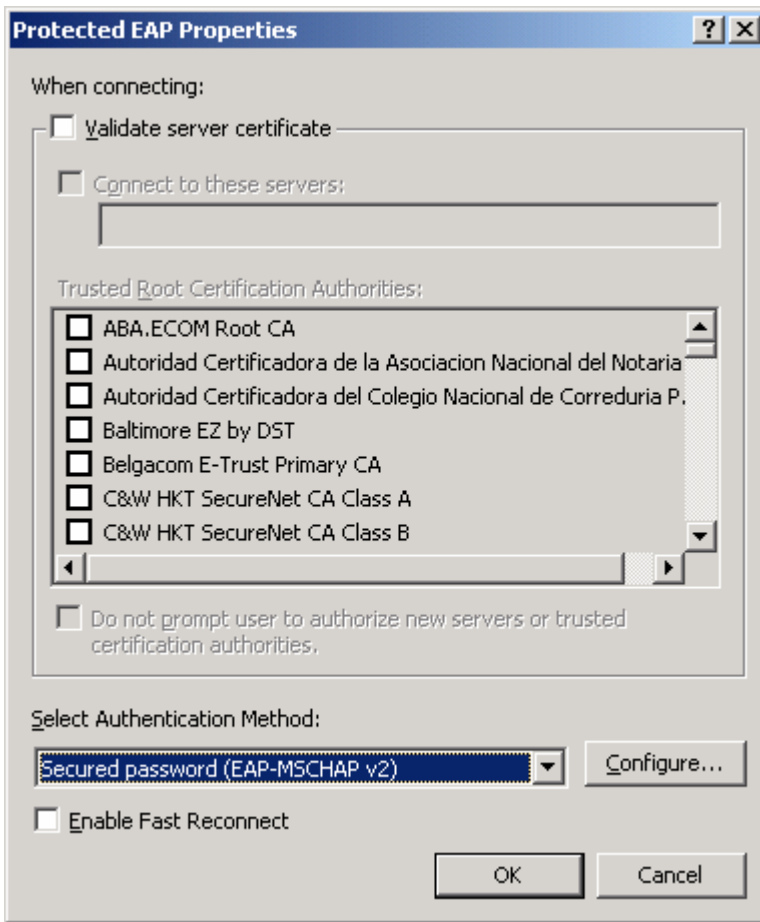


EAP type: Protected EAP (PEAP)

->Properties

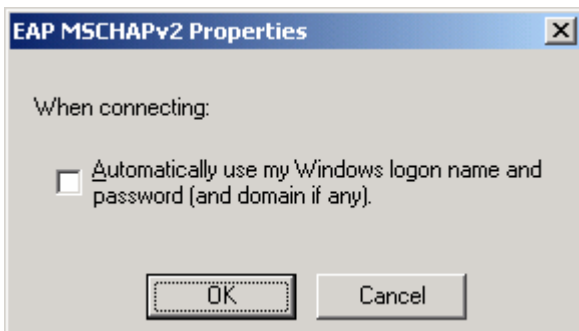
Uncheck: Validate server certificate

Select Authentication Method: Secured password (EAP-MSCHAP v2)

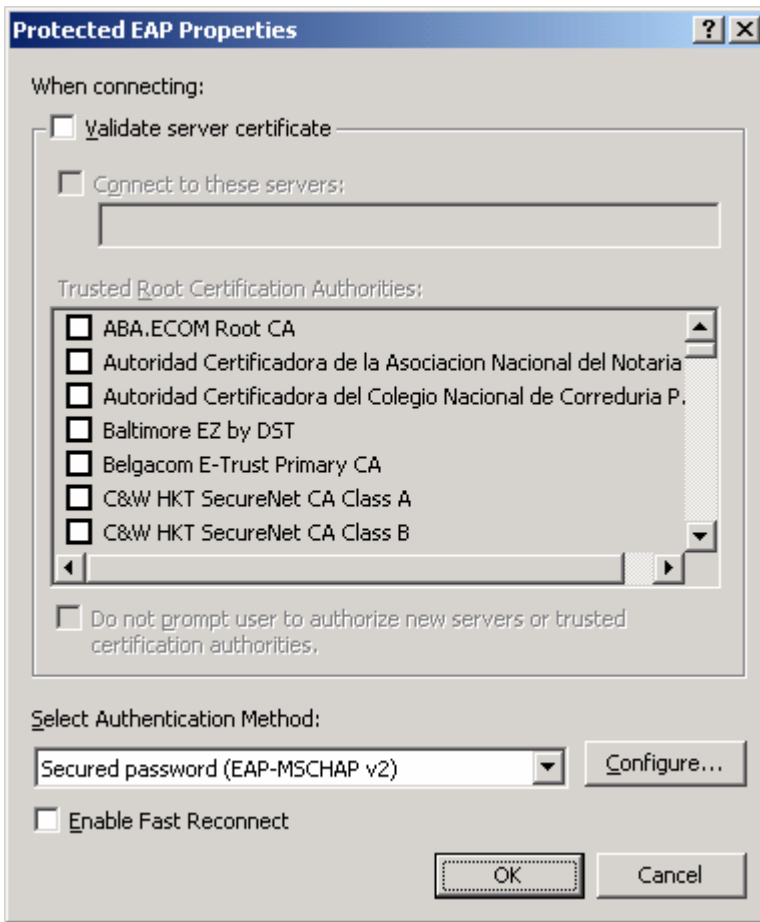


->Configure..

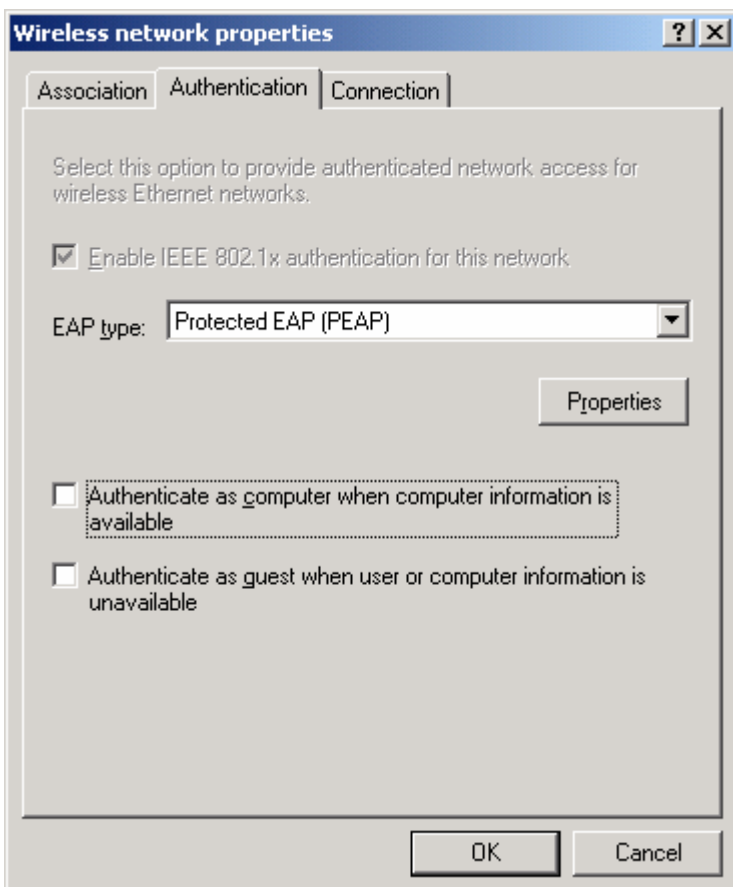
Uncheck: Automatically use my Windows logon name and password (and domain if any).



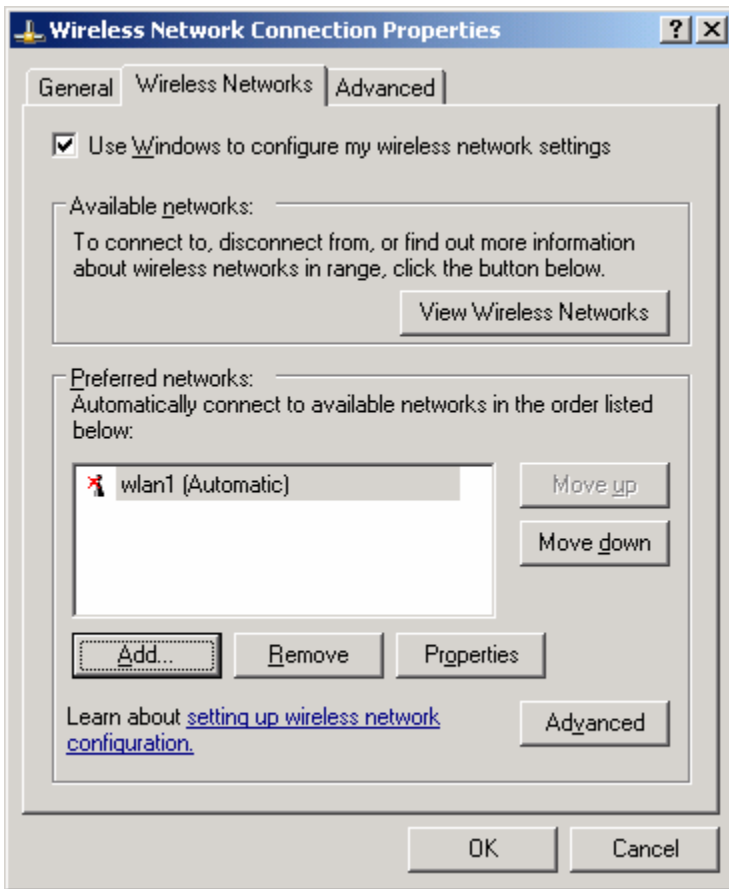
->OK



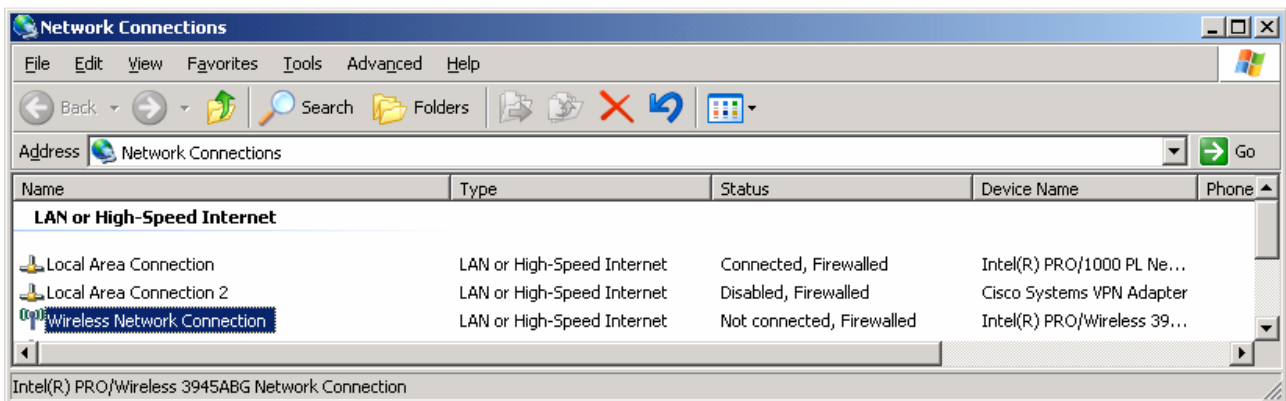
->OK



->OK



->OK



File->Close