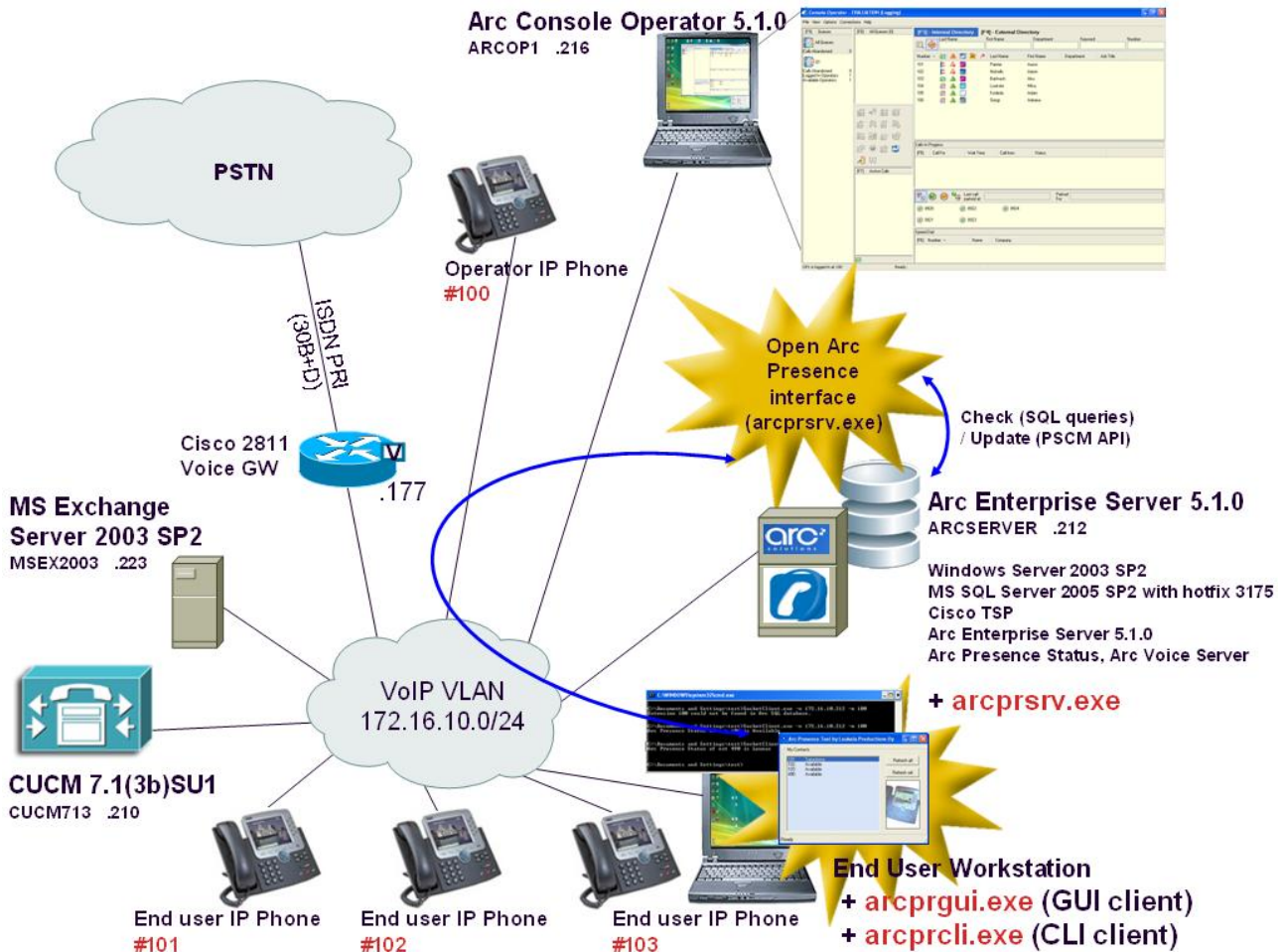


Loukola Productions Oy

Open Interface for Arc Presence. Enables checking and updating Arc Presence status information from external clients and systems.



This environment consists of:

- Frontend server process on Arc Enterprise server on UDP port 5150 (**arcprsrv.exe**)
- Command line client sw that communicates with the server piece (**arcprcli.exe**)
- Windows GUI client sw that communicates with the server piece (**arcprgui.exe**)

CLI client software enables easy integration of a third party presence (for example Building Security) to Arc Presence. In this way such third party presence status changes can override Arc Presence status of the same user/extension.

GUI client software is targeted for at end users and enables easy status monitoring and fast status updating by using customized speed buttons.

<http://www.loukola.com/apps>

CLI client / description: Windows command line client that can be used for easy Arc Presence status checking/updating:

```
arcprcli.exe -s server -c command -e ext -n newstatus -i  
info -d enddate -t endtime -f cfa
```

server = Arc server IP address

command = "get" or "set"

ext = Cisco extension number

newstatus = new Arc Presence status Display Name

info = new Arc Presence status info

enddate = new Arc Presence status expiry date *dd.mm.yyyy*

endtime = new Arc Presence status expiry time *hh:mm*

cfa = new Arc Presence status default contact number, or "no"

CLI client / example 1: Checking current Arc Presence status of extension 101.

```
arcprcli.exe -s 172.16.10.212 -c get -e 101
```

```
Arc Presence Status of ext 101 is:
```

```
Status: Available
```

```
Info:
```

```
End Date:
```

```
End Time:
```

CLI client / example 2: Checking Arc Presence status of extension 102.

```
arcprcli.exe -s 172.16.10.212 -c get -e 102
```

```
Arc Presence Status of ext 102 is:
```

```
Status: Loma
```

```
Info: Florida
```

```
End Date: 15.09.2012
```

```
End Time: 00:01
```

```
CFA: 00401234567
```

CLI client / example 3: Setting a new Arc Presence status for extension 102.

```
arcprcli.exe -s 172.16.10.212 -c set -e 102 -n Loma -i
```

```
Florida -d 14.12.2010 -t 10:31 -f 100
```

```
Server response: Updated.
```

CLI client / system requirements: Windows XP, Windows Vista or Windows 7. Program will be delivered with detailed installation and configuration guide.

OS requirements:

32-bit or 64-bit version of Windows XP, Windows Vista or Windows 7.

Tested on:

Win 7 Ultimate EN 32bit

Microsoft Windows [Version 6.1.7600]

Win Vista Home Premium EN 32bit

Microsoft Windows [Version 6.0.6000]

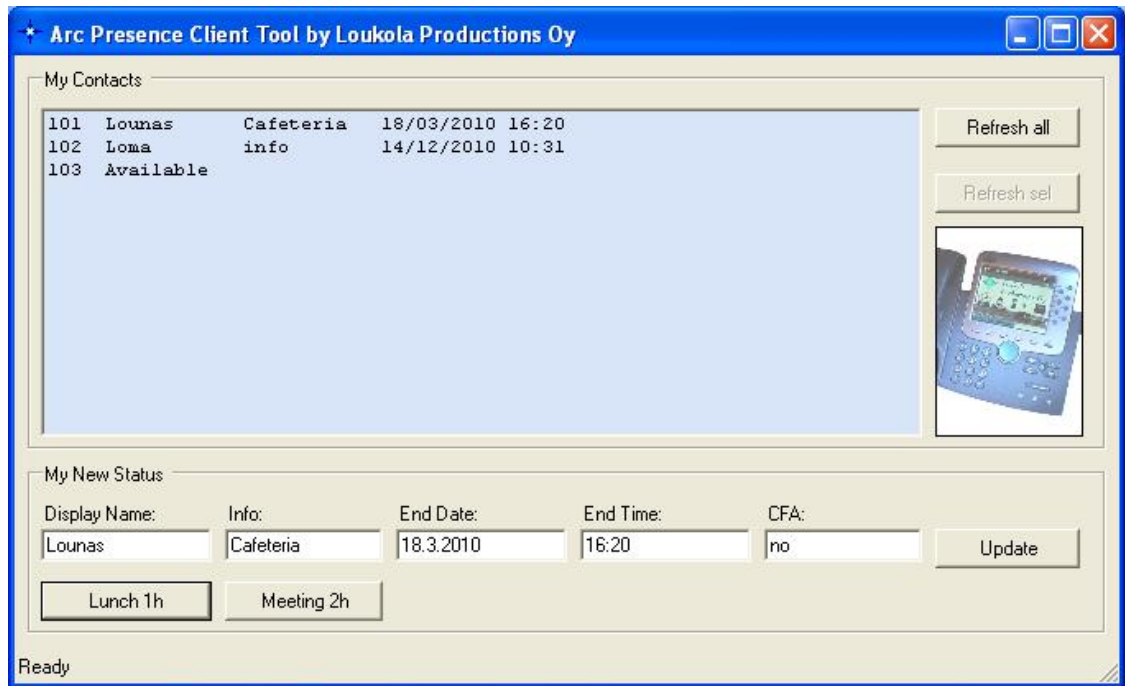
Win Vista Home Premium EN 6432bit SP1

Microsoft Windows [Version 6.0.6001]

Win XP Enterprise FI 32bit SP3

Microsoft Windows XP [Version 5.1.2600]

GUI client / description: GUI client software is targeted for at end users and enables easy status monitoring and fast status updating by using customized speed buttons.



GUI client / system requirements: Windows XP, Windows Vista or Windows 7. Program will be delivered with detailed installation and configuration guide.

OS requirements:

32-bit or 64-bit version of Windows XP, Windows Vista or Windows 7.

Tested on:

Win 7 Ultimate EN 32bit

Win Vista Home Premium EN 32bit

Win Vista Home Premium EN 6432bit SP1

Win XP Enterprise FI 32bit SP3

Microsoft Windows [Version 6.1.7600]

Microsoft Windows [Version 6.0.6000]

Microsoft Windows [Version 6.0.6001]

Microsoft Windows XP [Version 5.1.2600]

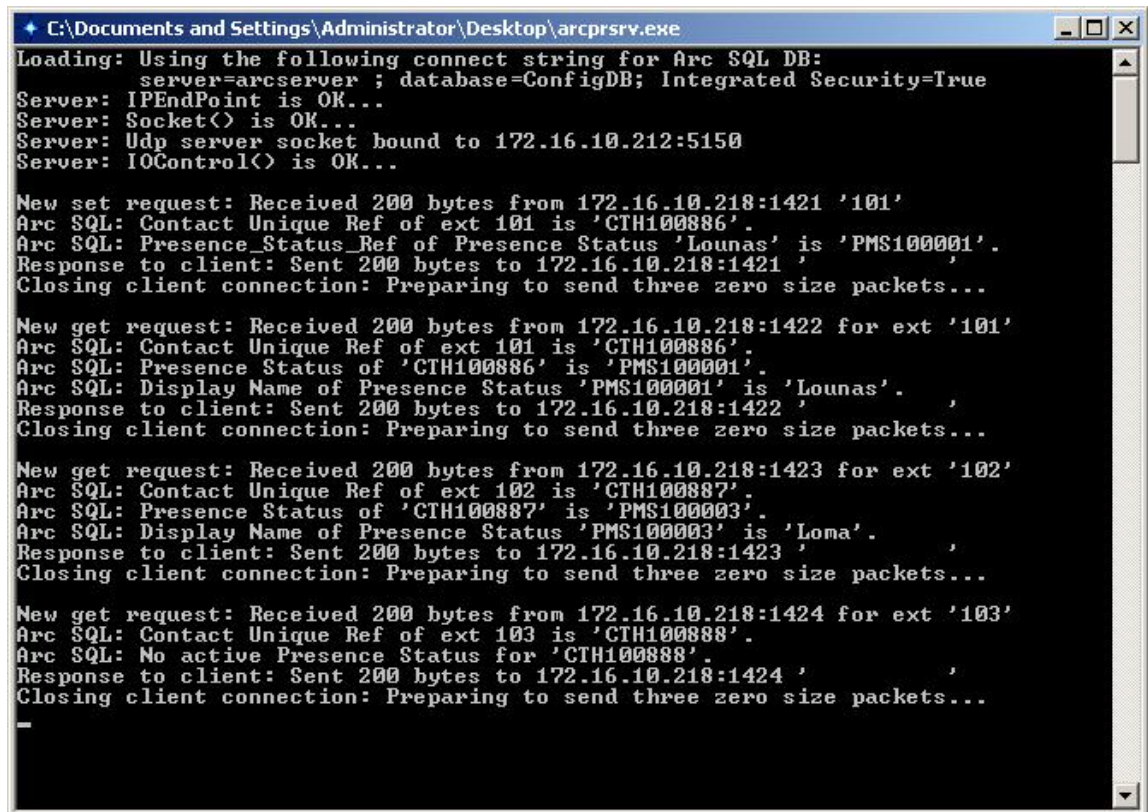
Server / description: Frontend server process on Arc Enterprise server (on UDP port 5150) that servers CLI and GUI clients. Status checks are processes via SQL queries and status updates are processes via PSCM API.

```
arcprsrv.exe -s server
```

server = Arc server IP address (local IP address of Arc server)

Server / example 1:

```
arcprsrv.exe -s 172.16.10.212
```



```
C:\Documents and Settings\Administrator\Desktop\arcprsrv.exe
Loading: Using the following connect string for Arc SQL DB:
server=arcserver ; database=ConfigDB; Integrated Security=True
Server: IPEndPoint is OK...
Server: Socket() is OK...
Server: Udp server socket bound to 172.16.10.212:5150
Server: IOControl() is OK...

New set request: Received 200 bytes from 172.16.10.218:1421 '101'
Arc SQL: Contact Unique Ref of ext 101 is 'CTH100886'.
Arc SQL: Presence_Status_Ref of Presence Status 'Lounas' is 'PMS100001'.
Response to client: Sent 200 bytes to 172.16.10.218:1421 ' '
Closing client connection: Preparing to send three zero size packets...

New get request: Received 200 bytes from 172.16.10.218:1422 for ext '101'
Arc SQL: Contact Unique Ref of ext 101 is 'CTH100886'.
Arc SQL: Presence Status of 'CTH100886' is 'PMS100001'.
Arc SQL: Display Name of Presence Status 'PMS100001' is 'Lounas'.
Response to client: Sent 200 bytes to 172.16.10.218:1422 ' '
Closing client connection: Preparing to send three zero size packets...

New get request: Received 200 bytes from 172.16.10.218:1423 for ext '102'
Arc SQL: Contact Unique Ref of ext 102 is 'CTH100887'.
Arc SQL: Presence Status of 'CTH100887' is 'PMS100003'.
Arc SQL: Display Name of Presence Status 'PMS100003' is 'Loma'.
Response to client: Sent 200 bytes to 172.16.10.218:1423 ' '
Closing client connection: Preparing to send three zero size packets...

New get request: Received 200 bytes from 172.16.10.218:1424 for ext '103'
Arc SQL: Contact Unique Ref of ext 103 is 'CTH100888'.
Arc SQL: No active Presence Status for 'CTH100888'.
Response to client: Sent 200 bytes to 172.16.10.218:1424 ' '
Closing client connection: Preparing to send three zero size packets...

-
```

Server / system requirements: Arc Enterprise 5.02/5.1.0, Arc Web XML Presence.

Windows OS/SQL requirements:

Windows Server 2003 SP2 32 bit, MS SQL Server 2005 SP2 + hotfix 3175

or

Windows Server 2008 32 bit, MS SQL Server 2008 SP1

Tested with:

Arc 5.0.2 on

Windows Server 2003 SP2 32 bit, MS SQL Server 2005 SP2 + hotfix 3175

Arc 5.1.0 on

Windows Server 2003 SP2 32 bit, MS SQL Server 2005 SP2 + hotfix 3175

Arc 5.1.0 on

Windows Server 2008 32 bit, MS SQL Server 2008 SP1